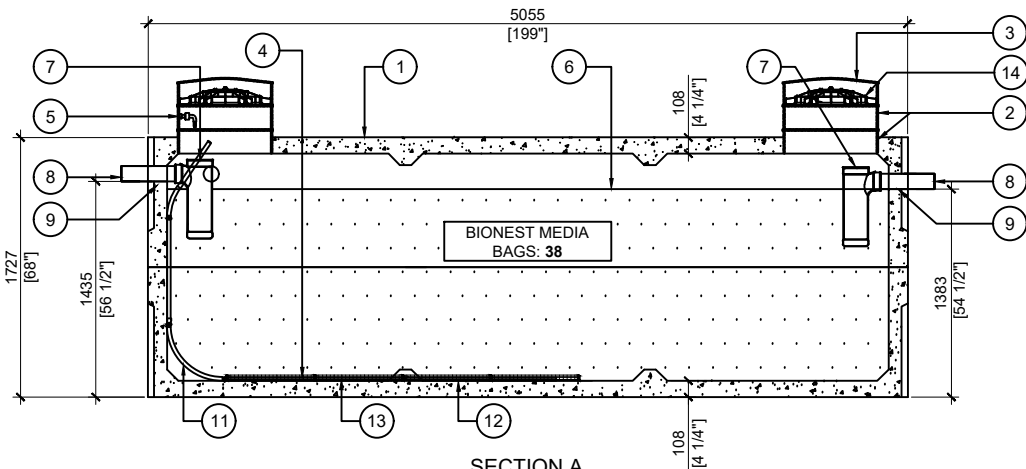
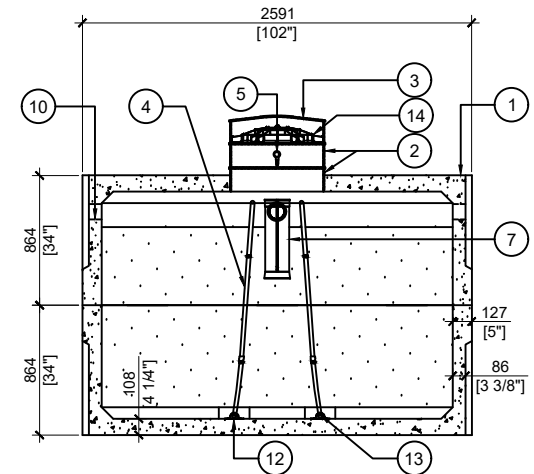


TOP VIEW
SCALE:1/50



SECTION A
SCALE:1/50



SECTION B
SCALE:1/50

BTT-6250-BCP REACTOR

POS.	ITEM #	DESCRIPTION	QUANTITY
1	413582	BTT-6250-BCP BIONEST REACTOR	1
2	408167	POLYLOK PLASTIC RISER 24"dia X 6"h	6
3	450046	POLYLOK LID 24" dia - VENTED COVER	2
4	*SUPPLIED BY BIONEST*	FLEXIBLE AIR DIFFUSER (2.2m) (1.05m from seem to top of diffuser)	2
5	*SUPPLIED BY BIONEST*	AIR LINE PIPE / MANIFOLD 2 OULETS	2
6	*SUPPLIED BY BIONEST*	BIONEST MEDIA BAG	38
7	408144	TUF-TITE EF-6" T-BAFFLE	2
8	112707	4 x 16" SOLID SEWER PIPE	2
9	112167	4" CAST.A.SEAL #452.0450	2
10	112622	4" CAST.A.SEAL #452.0450 (CLOSED FACE)	2
11	*SUPPLIED BY BIONEST*	Ø1-1/2" PVC ELBOW 90° BELL-END TO FACE UPWARD	2
12	*SUPPLIED BY BIONEST*	ABS PLASTIC STRIPS 5" x 24"	8
13	*SUPPLIED BY BIONEST*	AIR DIFFUSER CAGE 3.5" x 23"	8
14	450103	POLYLOK 24" SAFETY LID	2

GENERAL NOTES:

- UNITS ARE SEALED WITH BUTYL TAPE AT THE JOINTS
- DELIVERY IS MADE BY CRANE-EQUIPPED TRUCKS
- EXCAVATION MUST BE READY, SAFE AND ACCESSIBLE FOR UNLOADING FROM THE REAR OF THE TRUCK.
- MIN OVERHEAD CLEARANCE OF 18FT (5.5 METRES) IS REQUIRED
- ALL UNITS MUST BE HANDLED WITH PROPER LIFTING EQUIPMENT
- MAXIMUM BURIAL DEPTH = 1 METRE IN FIRM SOIL AWAY FROM ANY VEHICULAR TRAFFIC
- TANK TO BE STENCILED "BIONEST REACTOR"



MANUFACTURED:
BROOKLIN, ON
1-800-655-3430

CONCRETE: 35MPa at 28 days / 5000PSI
AIR ENTRAINMENT: 5-8%
REINFORCEMENT: STEEL TO CSA CAN
A23.1 /A23.3 G30.18 Fy=400MPa

WEIGHT: 26,142lbs / 11,857kg
BOTTOM: 13,281lbs / 6,024kg
TOP: 12,861lbs / 5,833kg
MEETS CAN/CSA-B66
BNQ CERTIFIED

DRAWN BY:
JAY PATEL

DATE:
MAY/2022

BTT-6250-BCP BIONEST REACTOR
13650L / 3000 IMPERIAL GAL. BIONEST TANK

WORKING CAPACITY: 14,213L TO INVERT OF OUTLET

TOTAL CAPACITY: 16,765L TO UNDERSIDE OF CHAMBER LID