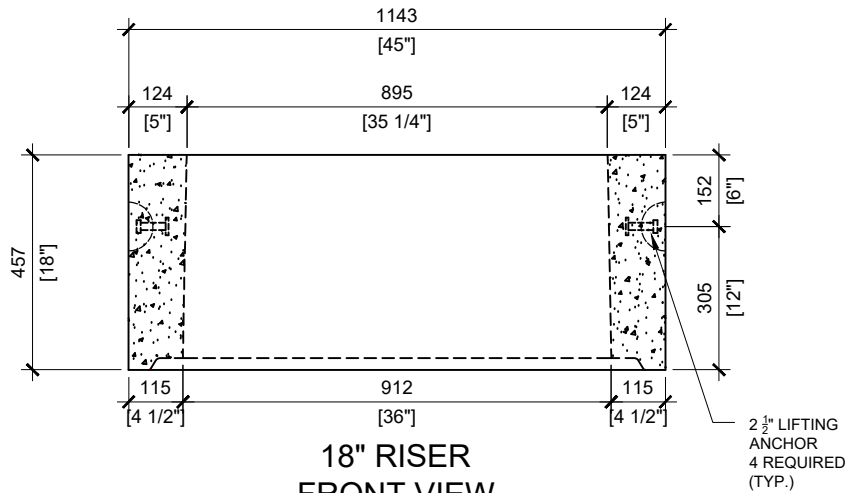


GENERAL NOTES

1. DELIVERY IS MADE BY CRANE-EQUIPPED TRUCKS
2. MIN OVERHEAD CLEARANCE OF 18FT IS REQUIRED
3. ALL UNITS MUST BE HANDLED WITH PROPER LIFTING EQUIPMENT (I.E. SPREADER BAR)
4. DESIGNED FOR A MAXIMUM FILL DEPTH OF 1000mm, NO MINIMUM FILL DEPTH AND 12kPa VEHICLE LOADING.

TOP VIEW
SCALE:1/16



18" RISER
FRONT VIEW
SCALE:1/16



MANUFACTURED:
LINDSAY, ON
1-800-655-3430

CONCRETE: 35MPa at 28 days/5000PSI WEIGHT OF 18" RISER: 1,138lbs/516kg
AIR ENTRAINMENT: 5-8%
REINFORCEMENT: STEEL TO CSA CAN
A23.1 /A23.3 G30.18 Fy=400MPa

DRAWN BY:
PRASHAN

DATE:
JUL/2024

36"X36" CONCRETE RISER 18" HIGH FLAT TOP

18" RISER - 36" X 36" INTERNAL OPENING