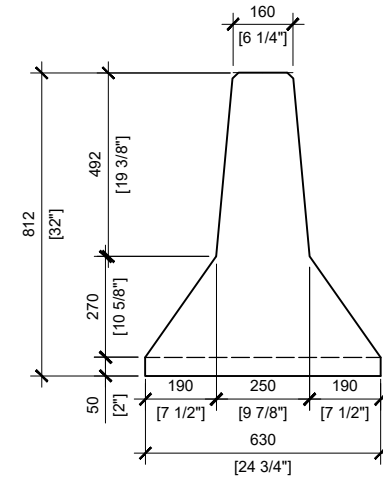
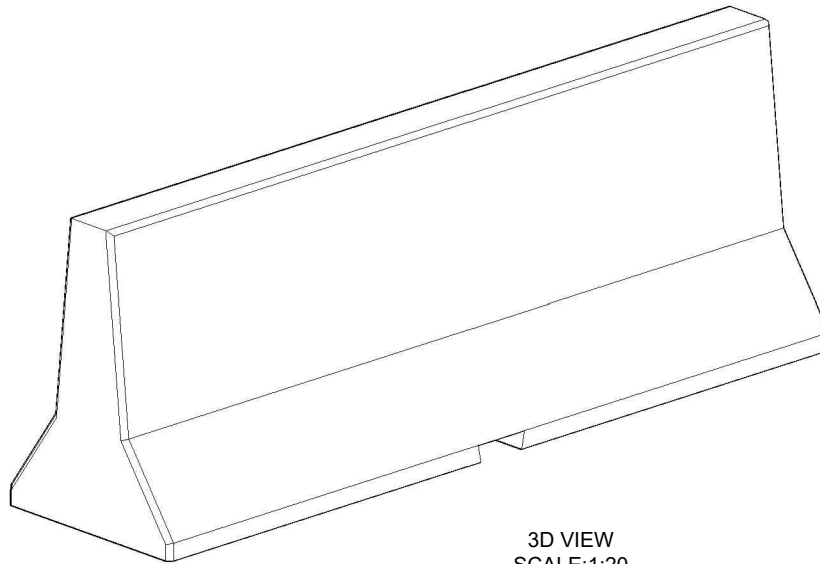


FRONT VIEW
SCALE:1:20



SECTION A
SCALE:1/20



3D VIEW
SCALE:1:20

GENERAL NOTES:

1. ALL UNITS MUST BE HANDLED WITH PROPER LIFTING EQUIPMENT (I.E. SPREADER BAR)
2. REINFORCING SHALL BE SIZE SPECIFIED AND GRADE 400W DEFORMED STEEL BARS. CONCRETE COVER SHALL BE 50MM MINIMUM
3. ALL CONCRETE EDGES SHALL HAVE 15X45° CHAMFER
4. WELDS SHALL BE ACCORDING TO CSA W59 AND CSA W186
5. ALL DIMENSIONS ARE IN MILLIMETERS UNLESS OTHERWISE SHOWN.



MANUFACTURED:
OTTAWA, ON
613-822-1488
www.powerprecast.com

CONCRETE: 35MPa
AIR ENTRAINMENT: 5-8%
REINFORCEMENT : STEEL TO CSA CAN
A23.1 / A23.3 / A23.4. G30.18 Fy=400MPa
AS PER OPSD 911.140

WEIGHT:
TRAFFIC BARRIER: 3,560lbs / 1,620kg

DRAWN BY:
A.A.HAMID

DATE:
DEC/2019

8' MEDIAN BARRIER

PRECAST CONCRETE BARRIER W/O END CONNECTION 2.4 m LENGTH
PPS REFERENCE: 409196